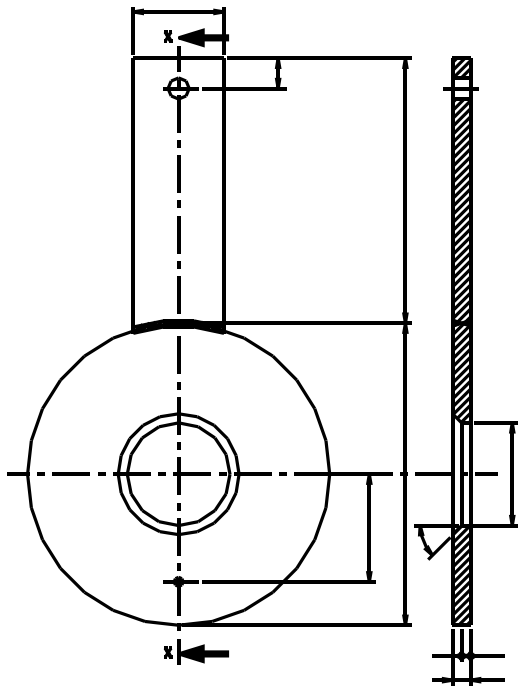


## ORIFICE PLATES



They are primary element to generate differential pressure for rate of flow measurement. Designed & made as per BS1042, or as per your given drawing or dimensions. Bore is precisely bored to exact tolerances & have sharpe lead edge to ensure accuracy. Line size i.e. exact I.D. & O.D. or pipe schedule, fluid data i.e. Name, Op. Temp., Op. Pressure, Maximum Flow details & maximum D.P. at full flow details are required for making or quoting. Standard construction is 304 S.S. or 316 S.S. . Any other construction is possible. Standard thickness are 3mm, 4.5mm & 6 mm. For easy reference, Fluid, Flow, Bore & Line size details are engraved on orifice plate handle.

## ORIFICE PLATE ASSEMBLIES



Orifice Plate with holding flanges nut bolts and gaskets are called orifice assembly Flanges generally are of M.S. / C. S., nut bolts M.S. Galvanized, Gasket C.A.F. Other construction is possible & will be made against order. Flanges generally are of 4 types a) weld neck b) Slip-on c) carrier Ring d) D & D/2 tappings or pipe run assembly. Pressure Tapping are in flange itself in 1st 3 types, while for D & D/2 they are on pipe. Assemblies supplied for 1½" to 24" Line sizes. Orifice bore calculations as per BS1042 on the basis of your given data is done & bore size is determined & made. Bore calculations are also provided alongwith instruments or can be sent for approval before manufacturing.